

# Mason™ Technical Specification

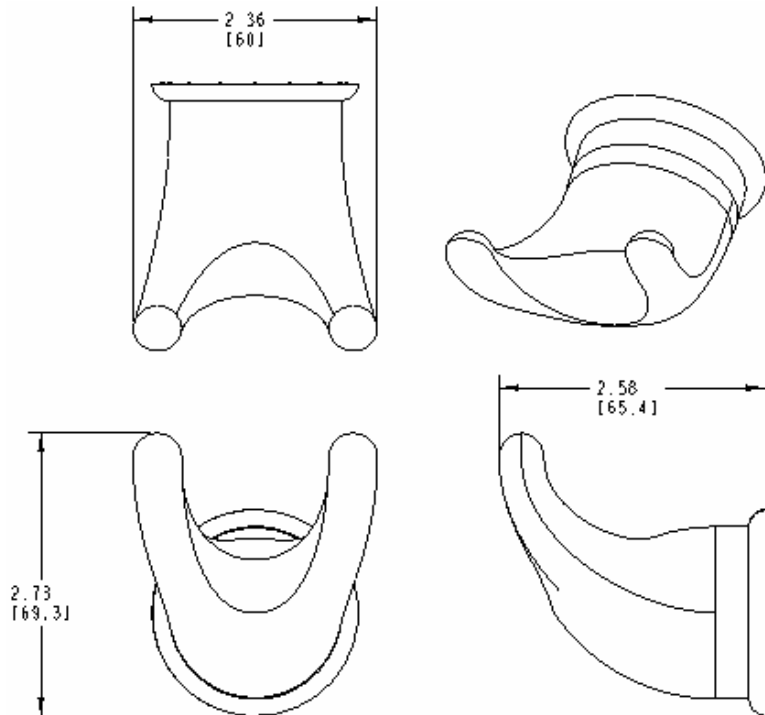
## Robe Hook

# YB8003

### Stock Numbers:

- q **YB8003CH – Robe Hook**  
Chrome Finish
- q **YB8003CP – Robe Hook**  
Chrome / Polished Brass Finish
- q **YB8003PB – Robe Hook**  
Polished Brass Finish
- q **YB8003BC – Robe Hook**  
Brushed Chrome Finish
- q **YB8003SN – Robe Hook**  
Satin Nickel Finish

### Dimensions:



### Materials:

Robe Hook is constructed of zinc.

### Installation Instructions:

1. Locate position where robe hook should be installed.
2. Using 1/4" drill bit, drill one pilot hole.
3. Position mounting post to wall by inserting wall anchor into pilot hole and pressing firmly.
4. Make sure that locking tab on mounting post is facing down (6 o'clock).
5. Tighten wall anchor screw while holding mounting post firmly in place.
6. Attach robe hook by pressing firmly to mounting post until it clicks. (The square opening at the base of the post must be facing down to match-up with locking tab.)
7. Place spring roller into each post.

### Cleaning Instructions:

To preserve the fine finish of this product, clean only with a soft damp cloth. Dry well. Do not use commercial or abrasive cleaners.

**Stock Number:** \_\_\_\_\_ **Robe Hook**  
**By Creative Specialties**



25300 AL MOEN DRIVE • NORTH OLMSSTED, OH 44070  
CORPORATE HEADQUARTERS: (800) 321-8809 • FAX: (800) 848-6636  
INTERNATIONAL: (440) 962-2000 • FAX: (440) 962-2726  
CUSTOMER SERVICE (USA): 800-882-0116 • FAX: (888) 379-2720

©Copyright Creative Specialties International 2004

Literature #BA1227